

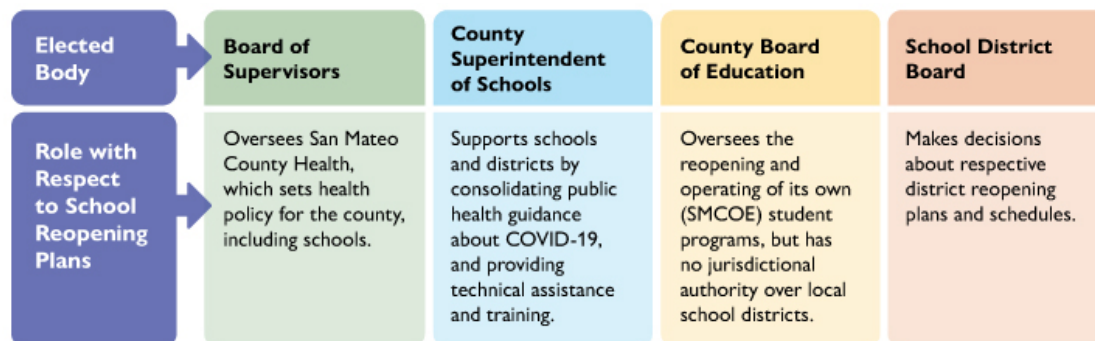
Thursday, April 8

Vaccination and Returning to Campus Update

Hello San Mateo education and child care community,

Now that most school staff and child care workers are vaccinated, we are increasingly asked about the requirements for those who are fully vaccinated. Do those who are fully vaccinated need to quarantine after travel or when identified as a close contact to someone with a positive case of COVID-19? Given the complexities of issues within the public health sphere, the answers are not always straightforward. Nevertheless, we tackle both topics around quarantine in the most recent edition of the [Pandemic Recovery Framework](#), which was released on Tuesday, April 6th. Additionally, the Pandemic Recovery Framework addresses the change in physical distancing rules from 6 feet to 3 feet between students in the classroom.

Understanding who provides public health guidance can also cause confusion. Because the San Mateo County Office of Education (SMCOE) produces the *Pandemic Recovery Framework*, which compiles guidance related to opening and operating schools, some assume that SMCOE also sets the policies around physical distancing, cleaning and disinfection, cohort groupings, and gatherings. However, setting health policy demands the expertise of public health organizations such as San Mateo County Health, the California Department of Public Health (CDPH), and the Centers for Disease Control and Prevention (CDC). The chart below helps identify the roles that local leaders play in school reopenings.



SMC Health, CDPH, and CDC communicable disease experts review research studies, assess public health conditions, and develop public health guidance to ensure schools can operate safely. SMCOE consolidates the guidance, which is found on the agencies' various websites, into a single document in order to provide schools and districts with technical assistance and support in implementing the

guidance in school settings. One challenge in this process is that public health agencies do not always release the same guidance at the same time. When this occurs, the rule is to follow the more restrictive guidance. You can find an FAQ on this topic on the [SMCOE website](#).

All of this coordinated effort helps ensure that our students and staff return to campus in the safest conditions possible. Our districts and schools have been working so hard to get as many students as possible back on campus for in-person instruction. The progress over these past weeks has been immense. Here is a summary of where we are today:

172 (61%) Schools Currently Conducting In-Person Learning

- Private: 69.6% (64/92)
- Public: 59.4% (104/175, 18 school districts)
- Charter: 28.6% (4/14)
- Total: 61.2% (172/281)

If you have questions about this message, please contact info@smcoe.org.

With great optimism for our shared success,



Nancy Magee
San Mateo County Superintendent of Schools